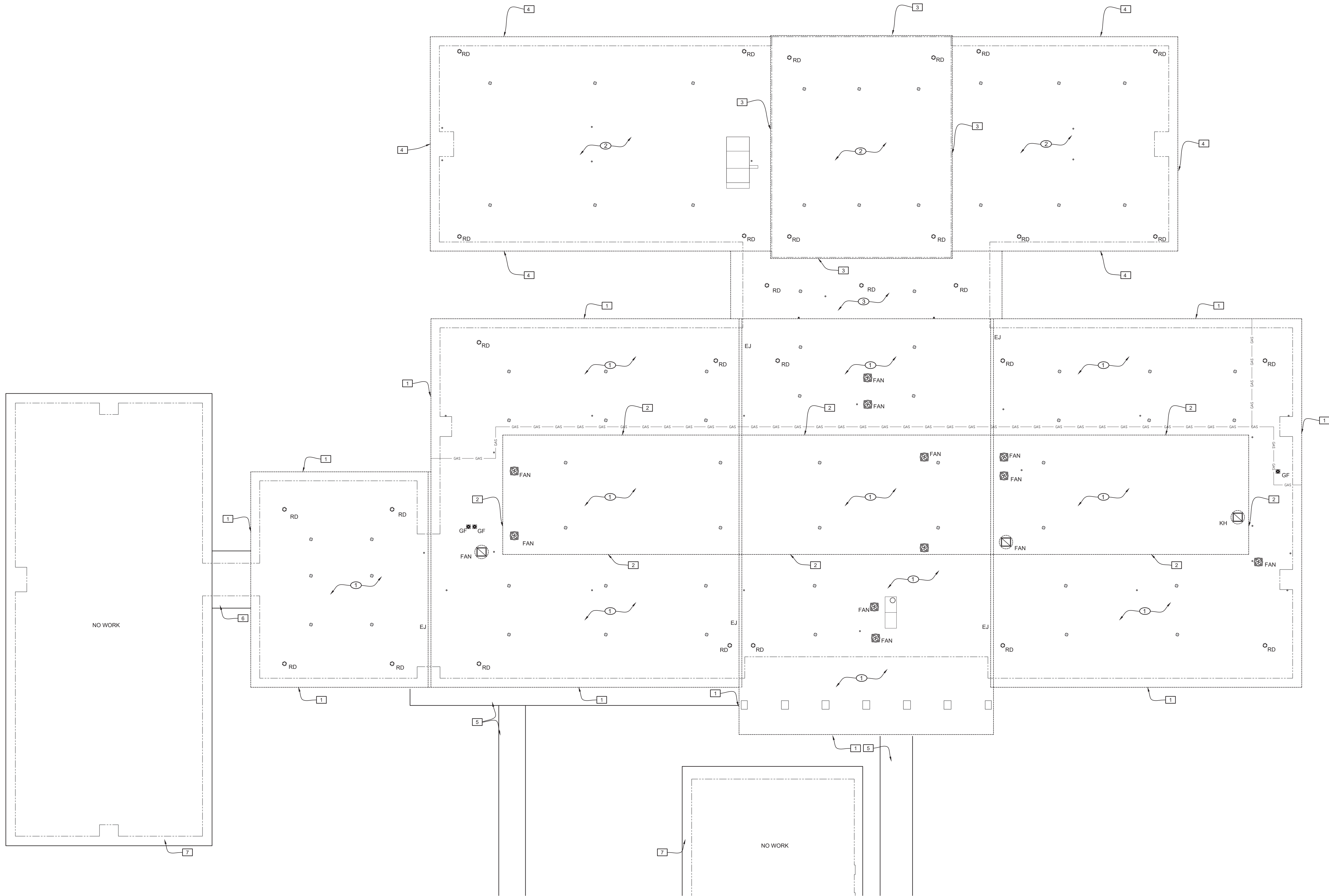


1 DEMOLITION ROOF PLAN
SCALE

1/16"= 1'-0"



DEMO NOTES : GENERAL

WHEN REMOVING EXISTING ROOF MOUNTED EQUIPMENT SUCH AS FANS, VENTS, ETC., CLEAN OFF ALL EXISTING ASPHALT, TAR, ETC. EXAMINE APPLIANCE FOR GOOD CONDITION : PREP TO BE REINSTALLED OVER NEW PVC CURB FLASHING.

SURVEY ALL EXISTING ROOF TOP FANS WITH SCHOOL BOARD PERSONNEL PRIOR TO REMOVAL. DOCUMENT IN WRITING, ALL NON WORKING DEVICES. ALL REMAINING DEVICES WILL BECOME THE RESPONSIBILITY OF THE CONTRACTOR TO OPERATE PROPERLY WHEN REINSTALLED.

DO NOT LEAVE ANY PENETRATIONS, EXPANSION JOINTS, COVERS, DOORS OR EXPOSED ROOF AREAS UNCOVERED OR OPEN OVERNIGHT.

TAKE ALL NECESSARY PRECAUTIONS AROUND PRECAST CONCRETE WALL PANELS. DO NOT DAMAGE.

ALL DEMOLISHED ROOFING LAYERS AND MATERIAL SHOULD BE DISPOSED OF PROPERLY BY CONTRACTOR.

ROOF DEMOLITION WITH DECK TYPES:

① DECK TYPE 1: LIGHTWEIGHT CONCRETE OVER STANDARD GA. CORRUGFORM METAL DECK ON STEEL STRUCTURE.
TEAR OFF ALL EXISTING ROOFING SYSTEMS INCLUDING: RIGID INSULATION BOARD, BUILT-UP ASPHALT ROOFS WITH EMBEDDED GRAVEL, RECOVER BOARDS, AND SBS MODIFIED GRANULE-FACED ROOFING.
AFTER TEAR-OFF, CLEAN ROOF DECK AND INSTALL TORCHED DOWN SINGLE-PLY MEMBRANE OVER 1/4" DENSDECK.

② DECK TYPE 2: RIGID INSULATION BOARD OVER 22 GA. METAL DECK ON STEEL STRUCTURE.
TEAR OFF ALL EXISTING ROOFING SYSTEMS INCLUDING: RIGID INSULATION BOARD, BUILT-UP ASPHALT ROOFS WITH EMBEDDED GRAVEL, RECOVER BOARDS AND SBS MODIFIED GRANULE-FACED ROOFING.
AFTER TEAR-OFF, CLEAN ROOF DECK, INSTALL TORCHED DOWN SINGLE-PLY MEMBRANE OVER MECHANICALLY FASTENED 3/4" DENSDECK.

③ DECK TYPE 3: RIGID INSULATION BOARD OVER 22 GA. METAL DECK ON STEEL STRUCTURE.
TEAR OFF ALL EXISTING ROOFING SYSTEMS INCLUDING: RIGID INSULATION BOARD, BUILT-UP ASPHALT ROOFS WITH EMBEDDED GRAVEL, RECOVER BOARDS AND SBS MODIFIED GRANULE-FACED ROOFING.
AFTER TEAR-OFF, CLEAN ROOF DECK, INSTALL TORCHED DOWN SINGLE-PLY MEMBRANE OVER MECHANICALLY FASTENED 3/4" DENSDECK AND TAPERED ISO INSULATION BOARD.

ROOF PLAN LEGEND - DEMO

- EXISTING ROOF SYSTEM BREATHER VENT : REMOVE AND DISCARD WITH EXISTING ROOF SYSTEMS.
- EXISTING ROOF DRAINS: REMOVE AND DISCARD EXISTING METAL STRAINERS, CLAMPING RINGS AND BOLT SETS. CAP DRAIN LINE AT ROOF DECK.
- EXISTING ROOF EXPANSION JOINT COVER: REMOVE COMPLETELY AND DISCARD INCLUDING ALL SBS FLASHINGS, EDGE AND TEE TRANSITIONS. REMOVE ANY NEOPRENE TUBING, INSULATION LINER MATERIAL ETC.
- EXISTING INTAKE OR EXHAUST FAN. DISCONNECT AND CLEAN OFF ALL ASPHALT AND DEBRIS. COORDINATE WITH OWNERS MAINTENANCE PERSONNEL TO PROVIDE FAN MAINTENANCE WHILE DISCONNECTED. PREP CURB FLANGE FOR REINSTALLATION ON NEW CURB FLASHING.
- EXISTING GAS FIRED APPLIANCE FLUE STACK : REMOVE AND CLEAN : IF STACK IS LESS THAN 24" HIGH ABOVE ROOF, REPLACE WITH NEW GALV. STACK.
- EXISTING BOILER FLUE: REMOVE EXISTING STEEL FLUE CAP AND CARRIAGE. CLEAN OFF SQUARE CURB PENETRATION. PREP FOR NEW INSULATED FLASHING BASE AND FLUE. LEAVE IN PLACE AND DO NOT DISTURB 4 PIPE BOILER FLUE STACKS. REF.: 15/A3
- EXISTING KITCHEN HOOD VENT FAN. DISCONNECT AND CLEAN : COORDINATE WITH OWNER PERSONNEL FOR MAINTENANCE. NOTIFY KITCHEN STAFF A MINIMUM OF 24 HOURS PRIOR TO ANY DISRUPTION IN HOOD SERVICE. CLEAN CURB AND PREP FOR NEW FLASHING.
- EXISTING CAST IRON PLUMBING VENTS : TYPICAL : VENTS ARE PROTECTED BY SPUN ALUMINUM COVERS WITH CAPS. REMOVE THE ALUMINUM COVERS AND DISCARD. USE ALL DUE CARE NOT TO DAMAGE CAST IRON. LEAVE IN PLACE ALL CAST IRON STACKS. REF.: DET. 16/A3
- EXISTING ROOF CURB MOUNTED HVAC UNIT. DISCONNECT AND CLEAN OFF ALL ASPHALT AND DEBRIS. COORDINATE WITH OWNERS MAINTENANCE PERSONNEL TO PROVIDE ANY MAINTENANCE WHILE DISCONNECTED. EXTEND DUCT WORK PER MECHANICAL. REINSTALL ON NEW CURB.
- EXISTING ROOF CURB MOUNTED HVAC UNIT. DISCONNECT AND CLEAN OFF ALL ASPHALT AND DEBRIS. COORDINATE WITH OWNERS MAINTENANCE PERSONNEL TO PROVIDE ANY MAINTENANCE WHILE DISCONNECTED. EXTEND DUCT WORK PER MECHANICAL. ROTATE 90° AND REINSTALL ON NEW STRUCTURE, PLATFORM AND CURB.
- CAREFULLY REMOVE EXISTING GAS LINE TO BE PLACED. NOTIFY THE CAMPUS A MIN. OF A WEEK PRIOR, NO STUDENTS CAN BE ON CAMPUS.

ROOF EQUIPMENT ABBREVIATIONS

- GF = HOT GAS FLUE STACK
- PV = CAST IRON PLUMBING VENT WITH COVER
- FAN = MOTORIZED FAN
- RD = ROOF DRAIN
- KH = KITCHEN HOOD EXHAUST VENT

DEMO NOTES:

- 1 REMOVE EXISTING PERIMETER FASCIA. PROTECT EXISTING PLASTER WALL PANEL AND SOFFIT TO REMAIN.
- 2 REMOVE EXISTING DOWNSPOUTS AND GUTTER. PROTECT EXISTING PLASTER WALL PANEL TO REMAIN.
- 3 REMOVE EXISTING METAL WALL PANELS. PROTECT EXISTING INSULATION BOARD TO REMAIN.
- 4 REMOVE EXISTING METAL WALL PANELS AND SOFFIT.
- 5 EXISTING WALKWAY COVERS TO REMAIN. PROTECT DURING CONSTRUCTION.
- 6 EXISTING FLAT PVC ROOF TO REMAIN. PROTECT DURING CONSTRUCTION.
- 7 EXISTING METAL ROOF TO REMAIN. PROTECT DURING CONSTRUCTION.

